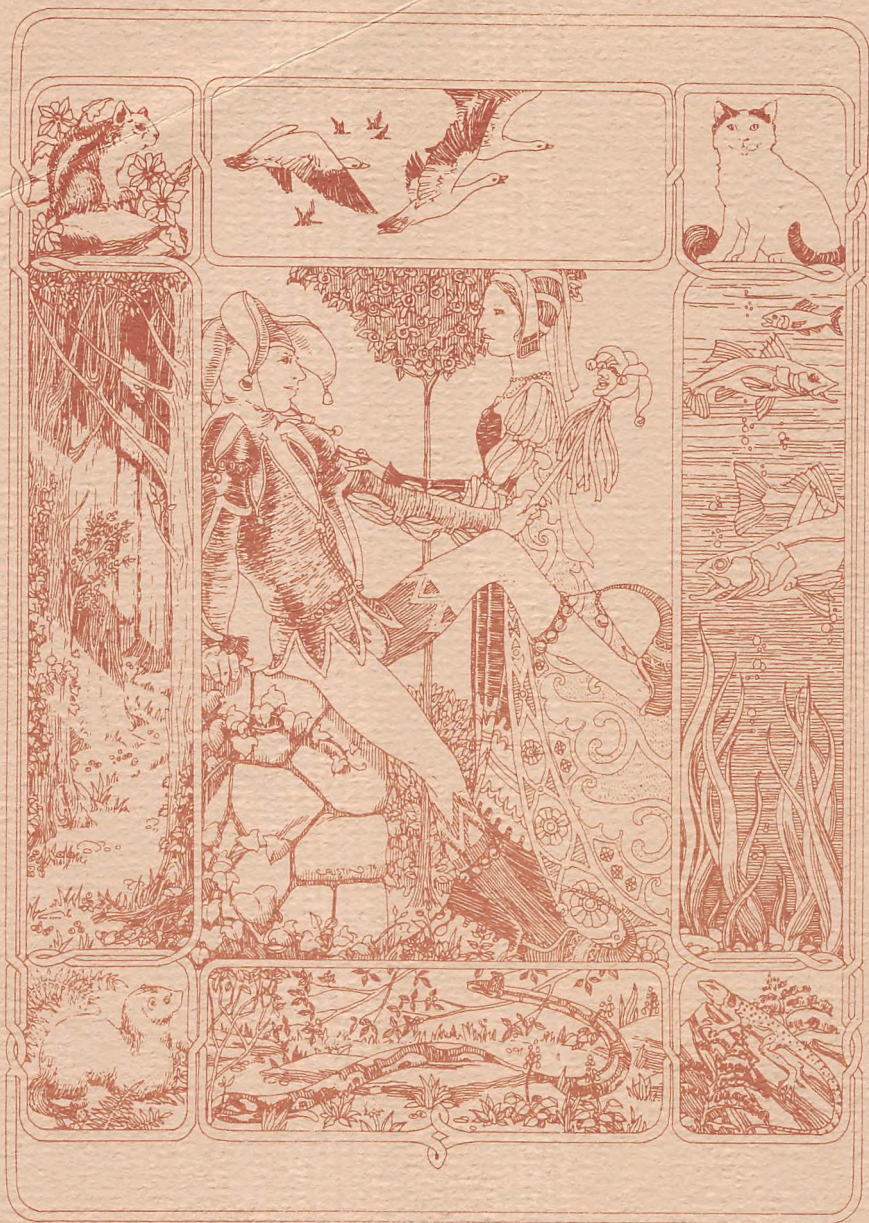


WAS CON

S T U D E N T H A N D B O O K



WISCON 9

1985 FEBRUARY 22-24



CONTENTS

Letter from the Chancellor	2
<u>Distinguished Visiting Professors</u>	
Lisa Tuttle	3
Alicia Austin	7
Dean's Office and Administration	10
Office of Intercollegiate and Public Relations	12
College of Social Interaction and Analysis	13
College of Exhibitional Science	16
School of Telecommunicational Arts	17
School of Program Development	18
Course Catalog	18
[NOTE: Course numbers in the catalog correspond to those on the timetable. A ★ indicates a course featuring a Distinguished Visiting Professor.]	
Register of Industrial and Commercial Benefactors	25
Register of Tenured Faculty	32

ART CREDITS

- Alicia Austin: FC, IFC, 9, 15, IBC
- Jinx Beers: 7 (photo)
- Diane Martin: BC (map)
- Christopher Priest: 3 (photo)
- Georgie Schnobrich: 11, 12, 17, 19, 20, 22, 23

HANDBOOK PRODUCTION NOTES

Text entry for this handbook was performed by Rebekah Rogge and Dennis Tiedt on a Morrow Design computer provided by Jan Bogstad and Phil Kaveny. Layout was by Lynne Ann Morse, Carrie Root, and Richard S. Russell, with guidance and counseling from Julie Gomoll. Proofreading was not performed by anybody who cares to be named. Printing was done at Gray-Willer Press, 8 S. Carroll St., Madison, WI, 53703. The handbook is published by the Society for the Furtherance and Study of Fantasy and Science Fiction (SF³), Box 1624, Madison, WI, 53701-1624. Any opinions expressed within are those of the authors and/or artists, not necessarily of SF³. Entire contents © 1985 by SF³ except items specifically copyrighted by the original authors and/or artists. All rights revert to the original authors and/or artists.

LETTER FROM THE CHANCELLOR

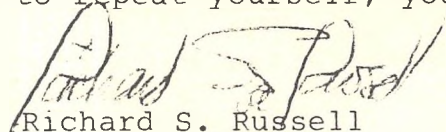
Welcome to WILT, the WisCon Institute of Letters and Technology.

As chancellor of one of America's great institutions, I take great pride in the leadership that our great faculty has established in the great world of academia, not to mention the greater Madison area. I am sure that, with all the great students we have entering and returning, this year will be WILT's greatest ever.

The faculty has devoted a great deal of time to establishing a great curriculum for the 1985 academic year. A great effort has been made to include courses at levels appropriate for freshmen (or "neofans", as they're called here) and more experienced students (or "old fans and tired", as they're called here). Students will also appreciate our great intercollegiate teams, the Mad Meese, which are going great guns this year. And, of course, we gratefully acknowledge the great work of our School of Social Interaction and Analysis in greatly expanding the great social life of our great campus.

I also take great pleasure in noting the inception this year of our sister campus, the WisCon Institute of Male Primacy, which has been established through the great generosity of the great-hearted Sen. Butch Y. Virago to promote research into the causes and cures of the rampant feminism which has been maliciously alledged to have infested our great institution. We can have great confidence that the WIMP will eliminate that great injustice.

In closing, let me remind you all that great variety is one of the great pleasures in life. Remember the great words of that great leader, Winston Churchill, when he said, "Some are born to greatness; some achieve greatness; and some have greatness thrust upon them; but the highest ideal of all is to have a truly great time!" Experience all that WILT has to offer, and try not to repeat yourself; you know how that can grate.



Richard S. Russell
Chancellor of WILT and WIMP

Distinguished Visiting Professors

LISA TUTTLE

When you stop to think about it, the Brits really have a lot to answer for. The whole imperialism thing, for starts, and the beastly way they've treated the Irish, and that business of burning the White House during the War of 1812 (before that, it was pink). Not to mention inflicting Margaret Thatcher and Benny Hill on the world. The thing that they went and made of with Lisa Tuttle a few years ago. She went over there, all unsuspecting, for the worldcon in 1979, and what did those bounders do? They kept her!

Lisa was one of our national treasures, even if she did come from Texas. In fact, she was one of the few things



that kept the state viable. When you weigh the contributions of Texas to the human race, on the minus side you've got Texas weather, the Dallas Cowboys, the bland stuff Texans think is Mexican food, and most Texans; on the plus side there's only Texas barbeque, the Turkey City NeoPro Rodeo in Austin, and Lisa Tuttle. Take away Lisa, and you've got to wonder if the state's worth preserving.

There's no doubt that Lisa's worth preserving, though. Let me tell you about her. She comes from Houston, which is a terrific city if you like to live in a wet sauna. She was an infamous teenage fan, writing for fanzines and editing her own, called Mathom, which she has steadfastly hidden from me over the years (if anyone has a copy, I pay cash). She went to college in Syracuse, New York, and learned about snow and wind-chill factors (I expect WisCon to give her a refresher course) and journalism. She was a Clarion graduate, attending the notorious Tulane Clarion, the one with all the angst and cannibal orgies. She was a protege of Harlan Ellison and lived in his legendary Blue Bedroom for a time. Then she went back to Texas, where she hung around with the Austin neopros, Steve Utley and Howard Waldrop and Joe Pumilia and Lew Shiner, and sometimes even collaborated with them. She got a job on the Austin American-Statesman as a typist, and before you could sing the theme song from The Patty Duke Show she was their television columnist, writing deep analytical pieces on nuance and counterpoint in Three's Company and flying to Hollywood every year to interview Big Stars.

Despite these formidable handicaps, she turned out to be one hell of a writer.

She's written more stories than I care to think about, all kinds of stories, polished little mainstream pieces, and science fiction, and fantasy, and contemporary horror. Two of her best stories, "The Family Monkey" and "The Hollow Man," were written for my New Voices anthology (I blackmailed her). Other terrific Tuttle tales include "Wives" and "The Other Mother" and the truly horrid "Bug House." And then there was "The Storms of Windhaven," which she co-authored with some other guy. Later that became the first part of Windhaven (Timescape 1981), her first novel. Her second novel, a ghost story called Familiar Spirit, set in her old house in Austin, came out from Berkley in 1983. She's also written a children's book, called Catwitch and a sort of metaphysical art book called Angela's Rainbow. She's presently working on an encyclopedia of feminism for a

British publisher. Her third novel, Gabriel, is finished and sound terrific but hasn't been sold yet (publishers, take note).¹

As for her fourth novel, I'm trying to talk her into doing a second Windhaven, so if you want to form a mob and descend on her and tell her what a great idea that'd be and how your lives won't be possibly complete without a new Windhaven novel and stuff like that, well, that'd be just fine.

In 1974, she won half of the second John W. Campbell Award for Best New Writer. More recently, she won all of a Nebula and turned it down. She's been nominated for the Hugo too, and one day she'll probably win that as well. She lives in Harrow, not far from the location of the first auto fatality in history, with a lucky bloke named Christopher Priest, who she up and married a few years back. She's very friendly and very witty and very talented and very gorgeous and altogether she'll be a terrific guest, and maybe if we're lucky she'll tell the Big Mouth Frog Joke during her GOH speech.

In fact, I've got a great idea (and won't it suprise those damned Brits?): why don't we keep her?

George R.R. Martin

1. Ms. Tuttle has since sold Gabriel to Sphere Books.

LISA TUTTLE: A SELECTED BIBLIOGRAPHY

BOOKS

Windhaven (with George R.R. Martin)

U.S.: Timescape Books, Simon & Schuster, 1981

Timescape, Pocket Books, 1982

U.K.: New English Library, 1982

Familiar Spirit

U.S.: Berkley Books, 1983

U.K.: New English Library, 1983

Catwitch (with Una Woodruff)

U.K.: Paper Tiger/Dragon's World Ltd., 1983

U.S.: Doubleday, 1983

Angela's Rainbow

U.K.: Paper Tiger/Dragon's World Ltd., 1983

Children's Literary Houses

U.K.: Paper Tiger/Dragon's World Ltd., 1984

SHORT STORIES

"Stranger In The House", Clarion II, ed. Robin Scott Wilson, Signet, 1972

"Till Human Voices Wake Us", Clarion III, ed. Robin Scott Wilson, Signet, 1973

"The Family Monkey", New Voices In Science Fiction, ed. George R.R. Martin, Macmillian, 1977
reprinted: The Best Science Fiction Of The Year, No. 7, ed. Terry Carr, Ballantine, 1978

"The Hollow Man", New Voices II, ed. George R.R. Martin, Jove, 1979

"Wives", The Magazine Of Fantasy & Science Fiction, December 1979 reprinted: The Best From Fantasy & Science Fiction, 24th Series, ed. Edward L. Ferman, 1982

"Bug House", The Magazine Of Fantasy & Science Fiction, June 1980

"The Other Mother", The Magazine Of Fantasy & Science Fiction, December 1980

"The Bone Flute", The Magazine Of Fantasy & Science Fiction, May 1981



ALICIA AUSTIN
A Brief Sketch

Alicia Austin followed in her family's artistic footsteps by beginning her own creative career at the age of six. She spent her formative years as an 'army brat' absorbing the different styles and philosophies of artists and schools in Texas, California, Arkansas, Canada, Germany and Japan before discovering her special penchant for fantasy art.

After attending Houston's Sacred Heart Dominican College on an art scholarship, Alicia studied art, biology and comparative anatomy at the University of Houston with thoughts of becoming a medical illustrator. She then moved to Canada where a college club science fiction and fantasy magazine coerced her into doing their illustrations.

And thus a hobby was born.

Shortly thereafter, Alicia displayed her work at the 1969 WORLDCON Convention in St. Louis, where every piece was purchased during the first two days of exhibition.

And thus a career was born.

Alicia's popularity has grown steadily in the last fourteen years. Magazine assignments have led to book and cover assignments. An anthology of her work, "Age of Dreams: The Illustrations of Alicia Austin," was published in 1978. Her national recognition expanded dramatically in 1980 with the publication of three books and a major short story. Her reputation was confirmed in 1981 with the publication of four books, a portfolio, a group of magazine commissions and an ever increasing number of exhibits. Her private works, distributed exclusively by the artist on the West Coast and The Pendragon Gallery on the East Coast, are prized by collectors across the country.

Alicia is currently augmenting her artistic horizons by working with etchings, acrylics and Southwestern art. She is very excited about these new directions and manages to work simultaneously in her new style, her old style and a combination of the two.

While she undertakes personal commissions on a limited basis, Alicia still manages to find time to work with such distinguished authors as Ursula K. LeGuin and to accept some of her frequent invitations to appear as guest of honor at science fiction and fantasy conventions. She was recently chosen as a principal artist for "The Enchanted World," an important new publication series from Time-Life Books.

Honored in 1970 with the Hugo Award for Best New Artist, Alicia has consistently ranked in the top ten of the Hugo's professional surveys. In 1979, she received both the Balrog Award for Best Professional Publication and the Howard Award for Best Fantasy Artist. In 1982, her work was added to the permanent collection of The New British Museum of American Art.

Alicia is a member of the Graphic Artist Guild, the Association of Science Fiction Artists and the Los Angeles Business and Professional Association.

At one of her many convention appearances, Alicia was asked to describe herself and her work. "I've been told that a picture is worth a thousand words," she said. "If that's true, there's a whole library in the next room devoted to Alicia Austin. Go read it."

Jinx Beers

ALICIA AUSTIN: A SELECTED BIBLIOGRAPHY

New Worlds of Fantasy 3, edited by Terry Carr, Ace, 1971

Universe 1, edited by Terry Carr, Ace, 1971

Age of Dreams: Illustrations of Alicia Austin, Alicia Austin,
Donald Grant, 1978

Destinies, edited by James Baen, Ace, 1979

Voorloper, Andre Norton, Ace, 1980

Patricia McKillip's The Forgotten Beasts of Eld: A Portfolio,
Alicia Austin, Schanes/Schanes, 1981

Asimov's Science Fiction Magazine, edited by George Scithers,
Joel Davis, 1981

Solomon Leviathan's 937th
Trip around the World,
Ursula K. Le Guin,
Cheap Street, 1983

Fairies and Elves, Dragons,
and Wizards, assorted
authors, all part of
the series The Enchan-
ted World, Time-Life,
1984



Dean's Office and Administration

● PARKING

There is free parking for students and faculty who are rooming at the Concourse; parking there for commuters is expensive. Try the ramp on North Carroll Street, kitty-corner across the street from the hotel.

● REGISTRAR'S OFFICE

Registration will provide you with your University ID (name badge) and WisCon publications.

Registration Hours:

Friday: noon to 11p.m.

Saturday: 9 a.m. to 6p.m.

● UNIVERSITY ID

Please remember to wear your University ID badge at all times while on campus. It gets you into all events. If you lose your badge, check with registration, which will give you three demerits before issuing you a new one.

In the interests of recycling and (mainly) maintaining low tuition, please drop off your plastic ID badge holder at the WisCon registration desk when you return home for summer break.

● HEALTH SERVICE

Dr. Susie Kinast-Porter, head of Student Health Services, requests that you make sure you eat and sleep enough. Persons with emergency medical skills please identify yourself to the registration desk and leave your room number for emergencies. Also, Madison does have good paramedics, and the hotel has a doctor available by phone. Anyone with a specific health problem may want to let WisCon registration know as well (ie. diabetes, epilepsy, heart conditions).

● SMOKING

In general, smoking is prohibited in Campus program areas. That still leaves lobbies, corridors, and your own rooms available for smoking. Half of the Ballroom is designated as a smoking area, except when films are being shown. Smoking is prohibited in the main Student Union room, but is permitted in the adjoining room.

● TELEPHONE

During the con, you reach University Administration by calling the Concourse (608-257-6000) and asking for the WisCon office. After the con, it's 608-251-6226 days and 608-233-0326 evenings and weekends.



● CHILD CARE

Child care is being organized on a voluntary basis. If you would like to get together with other people who are interested in working out some sort of cooperative child care, put a message on the message board in the corridor.

● HOTEL CHECKOUT

Check-out time for the Concourse is 1:00 p.m.

● PROTECTION AND SECURITY

Please be very careful about leaving your valuable property lying around. Neither WisCon nor the Concourse Hotel can be responsible for articles left unattended.

● FOOD AND DRINK

There are two restaurants and three bars in the Concourse itself. The Greenhouse is the coffee shop on the first floor; it's open for breakfast, and has an excellent salad bar. The Normandy is a fancier place, with fancier prices. Both have great desserts, and a selection of these will be available at the dessert reception on Saturday night.

Hours

The Greenhouse

Fri.: 6:30 a.m.-11:00p.m.

Sat.: 7:00 a.m.-11:00p.m.

Sun.: 7:00 a.m.-10:00p.m.

The Normandy

Fri.: 5:00 p.m.-11:00p.m.

Sat.: 5:00 p.m.-11:00p.m.

Sun.: Closed

Many more good (and cheap) restaurants are within walking distance, and still more within easy driving distance.

There are several ads in this program book, and a "Restaurant Guide" will be on the Freebee table; we'd appreciate your giving our loyal advertisers a try.

PLEASE NOTE: A Madison city ordinance prohibits the sale of carryout alcoholic beverages after 9:00 p.m.

Office of Intercollegiate and Public Relations

Mad Moose Gazette

You'll recognize the official university newspaper by the masthead logo printed above. At least two issues will be available at the convention (Friday afternoon and Sunday morning), and they can be picked up at the freebee table near the registration desk. Submissions of news, artwork, and innuendo are welcome, and should be deposited in the Mad Moose Gazette news box at registration; but remember: all items must be signed. Friday's issue will contain many essential changes to the program book. Sunday's will list art show and masquerade winners and attendance statistics.



GEORGIE SCHNOBRICH

●TIMETABLE CHANGES

Publication deadlines being what they are, this program book and the accompanying pocket program contain information which was fairly firm as of mid-February. Changes we know about up to Feb. 22 will be listed in the first issue of The Mad Moose Gazette, distributed on the freebee table near WisCon registration. Subsequent changes will be listed in the Sunday issue of the newszine, advertised on posters, and in some cases announced verbally at the event itself.

●ETIQUETTE

Besides the university's policy on alcohol and smoking, other policies do exist. Please avoid damage to the facilities and to the non-student members of the community. Remember, this is your university too.

Please note that all campus activities on the second floor of the facilities must be terminated by 12:30 p.m. The faculty and staff have no discretion to vary that rule.

College of Social Interaction and Analysis

●STUDENT UNION (Hospitality Suite)

Once again, WisCon will be offering the best of Wisconsin Bheer and assorted soft drinks, along with a selection of crunchy green things to supplement our more traditional Junque Food. Both smoking and non-smoking rooms will be available, and we ask that you respect these boundaries.

Hours

Open	Close
Fri 8:30p.m.	Sat 4:30a.m.
Sat 8:00a.m.	Sat 3:00p.m.
Sat 9:00p.m.	Sun 4:30a.m.
Sun 8:00a.m.	Sun aft.

●ALCOHOL

As usual, WisCon is totally at the mercy of you, the fan, to see that the Con is not marred by ugly incidents involving the careless use, abuse, display, and distribution of alcohol. We ask, first of all, that you do not take alcoholic beverages outside of the areas where you got them. Hotel policy on this dictates that we do not compete with any of the cash bars on the premises.

Secondly, Wisconsin drinking age is 19. State law provides for the slow dismemberment of those ser-

ving alcohol to minors. So we are understandably reticent to take risks in this area. It's not fair, but this means that some members may be asked for ID when seeking bheer in the Student Union, and may be refused service on the inability to provide same.

●HOMECOMING DANCE

The U.W. College of Social Interaction and Analysis is pleased to announce that it will again be conducting it's annual experiment in the effects of music on limbic motor control at the poolside terrace dance floor, immediately following opening ceremonies. D.J. Dr. A.P. "Tiger Man" Hooper will be spinning hot wax from the age of long-finned automobiles up to what is widely held to be the present, for your dancing pleasure. A cash bar will also be on the premises.

●RECEPTION OF THE DVP'S

Because of general dissatisfaction with last year's banquet and generally unreasonable costs, there will be no alumni banquet this year. Instead, coffee will be served in the Ballroom A at 6:30 p.m. Saturday evening, and the Distinguished Visi-

ting Professors' speeches will follow. A desert cart will be present, and a wide selection of deserts will be available for \$2.00 a piece. **Please note that there is only a limited amount of tickets available to the desert reception and tickets may not be available at the door.**

●SPORTING EVENTS

The U.W. will be sponsoring two new events this year: the WisCon Trivia Open and the Mike DuCharme Memorial Charades Tournament. Teams may register for the events until starting time, but only eight teams will be accepted for each event. For the Trivia Tournament, from four to six players may comprise a team. Each Charades team may have from six to eight members, in accordance with NCAA regulations.

Prizes will be awarded to the winning teams and the public will be invited. In fact the final round of the Charades competition will be used as half-time intertainment during the Masquerade on Saturday afternoon.

(Remember, only eight teams can enter, so sign up early. Competing teams are urged to give themselves fannish monickers, so that we may avoid such boring titles as "Team A" and "Team B".)

●ROLEPLAYING GAMES

In the category of Intramural Athletics, the U.W. will be providing space for open board gaming and role-playing games throughout the con. On Friday this room will also be the site of WisCon's official role-playing tournament for 1985. The scenario, involving strange doings at a science fiction/fantasy convention, uses the ChaosiumTM role-playing system "Call of Cthulu", and will challenge advanced players while remaining comprehensible and fun for beginners. The game will run from 7:00 to 11:00 p.m. Friday night.

●MRS. BYRNE'S DICTIONARY

This is a game of skill, cunning -- and deceit. It's a game of strange words, and even stranger definitions. Mrs. Byrne will increase your vocabulary and blow your mind. The rules are simple: You must choose between real imaginary definitions while enticing other players to be fooled by the definitions you create. We supply the writing materials and The Book: Mrs. Byrne's Dictionary of Unusual, Obscure and Preposterous Words.

HOURS

Fri: Approx. 10:30 p.m.
(after Charades) - ?
Sat: 9:00 p.m. - ?

● OPENING CEREMONIES AND
CHANCELLOR'S ADDRESS

A must for first-timers: learn how to survive registration, proper panel etiquette, and how to ride a sand worm. And we promise not to use any material on 1984. (If you believe that, we've got this terrific real estate deal in Sheboygan....)

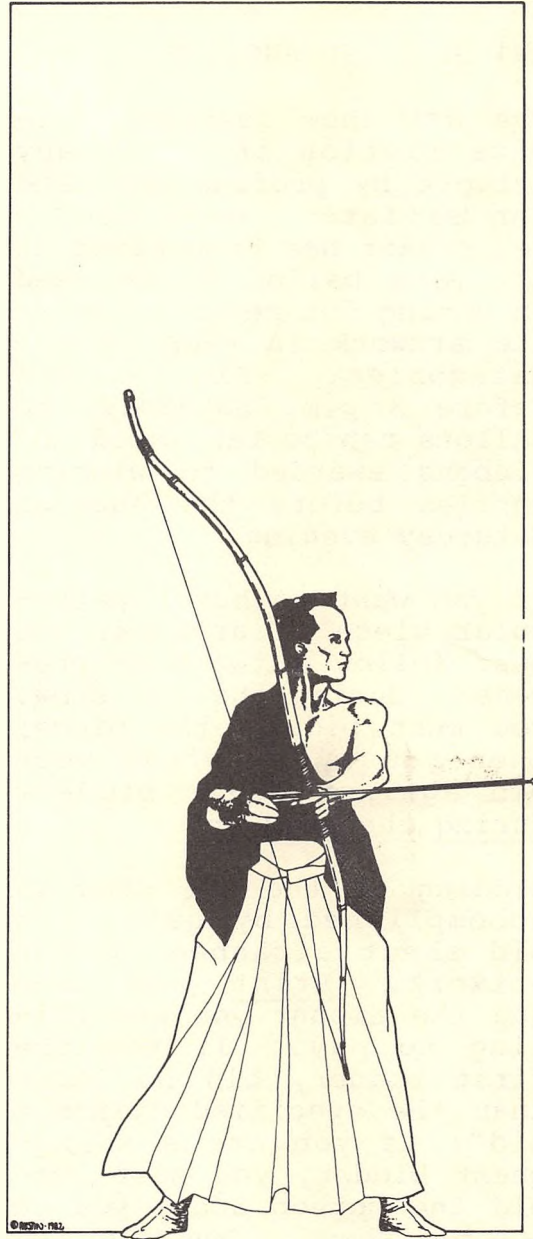
● MASQUERADE

WisCon's annual costume contest will be highlighted this year by the final round of the Charades Competition during the judging interlude. The highly qualified faculty of the Department of Textile and Design will be awarding ribbons in a variety of categories.

● FILKING SCIENCE

A haven for the musically inclined, the filksing room is where folks meet to sing-a-long to fannish (and sometimes just folksy) songs.

This year there will be a session of nihilist type filksinging on Saturday afternoon. As it is for the rest of the time in the filksinging room, acoustic instruments only are allowed.



College of Exhibitional Science

●ART SHOW AND AUCTION

The art show features science fiction and fantasy artwork by professional and fan artists. Each WisCon registrant has been given an art show ballot to be used in voting for her/his favorite artwork in each of the categories. Please vote before 3 p.m. Saturday, so ballots can be tabulated and ribbons awarded to winning entries before the auction Saturday evening.

If you want to buy a particular piece of artwork, you must follow a two-step process: during the art show, you must bid on the piece; then you must defend your bid against other bidders during the auction.

Bidding at the art show is accomplished by using the bid sheet attached to the artwork. Print your name and the amount you are willing to pay. If you the first bidder, bid no lower than the specified "minimum bid"; if you are a subsequent bidder, you must outbid the person above you on the bid sheet. Don't bother bidding on "NFS" (not for sale) items, just enjoy them. There is one other

alternative this year. Some artists may authorize us to sell their work at minimum bid after the auction; this will be marked on their bid sheets. If a piece you want does not go through the auction, check the bid sheet. Keep in mind that **all** items with bids will go to auction Saturday night.

To bid at the auction, you must register your name, address, and phone number at the door and get a bidder number, even if you just want to defend the last bid on a bid sheet. At the auction, artwork with the most bids and/or which have won prizes will be brought up first, and the bidding will be opened with the last amount on the bid sheet. If no one else bids, the last person on the list gets the artwork. Otherwise, it goes to the highest bidder from the floor.

You may pay for artwork in cash, by personal checks, or by money order; WisCon does not accept credit cards. As soon as you have paid, you may take your artwork with you. If you are bidding on more than one work, your earlier purchases will be set aside so that you can pay for all at once.

Art Show Hours

Fri: 6:00 p.m.-12:00 p.m.
Sat: 10:00 p.m.-8:00 p.m.

●UNIVERSITY BOOKSTORE

A variety of dealers, from collectors to bookstores, will offer books, magazines, games, and crafts --new, used, and rare-- for sale.

HOURS

Fri: 2:00 a.m.-6:00 p.m.
Sat: 10:00 a.m.-6:00p.m.
Sun: 10:00 a.m.-2:00p.m.

●COMPUTER SCIENCE INSTRUCTION

The Computer Science facilities will be having an Open House Friday, Saturday, and Sunday. A number of our students will be showing their computers and demonstrating the applications of their equipment. Consultants will be available on a wide range of subjects including Telecommunications, Computer Bulletin Systems, Business Applications of Microcomputers, Games, Simulations, and many others. The staff will be happy to answer general questions.

We are inviting dealers to demonstrate their latest wares as well. Drop by to see our complete schedule of events.

School of Telecommunicative Arts

Over the past several years an extensive library of video tapes has been produced by **THE SOCIETY FOR THE FURTHERANCE OF FANTASY AND SCIENCE FICTION**. A sampling of these tapes will be available in the media room for viewing along with a few real stinkers that we have to show for sentimental reasons.

For film information and available video features check the program book insert.



School of Program Development

This year it has been my pleasure to help bring together a program that is as exciting and distinguished as any I can recall from past WisCons. It spans the sublime to the ridiculous, the basic to the very esoteric. We have brought together a remarkable faculty of fans, far-sighted academicians, and authors whose works are on the cutting edge of science-fiction and fantasy today. I recommend this program to you. It is the very heart of WisCon. If you miss all the programming, you have truly missed more than half of the convention.

Dean College of Letters and
Science
Gregory G. H. Rihn

● THE GREEN ROOM

WisCon has set aside a "Green room" to provide panel participants with refreshments and quiet before the scheduled starting time of the panel, to meet each other and plot strategy. (The Green Room is intended as a convenience, not a requirement.)

Course Catalog

1. Abnormal Sociology 103:
Fandom Jeanne Gomoll, Lon
Levy, Glen Boettcher, Nancy
Mildebrant, Diane Pavlac
1.5 hours

What's this convention
all about anyway? What's an
APA? A zine? Blog? Cor-
flu?

2. Business 222: **Tax Pre-
paration for Writers and
Artists** Sue Blom, Jinx Beers
1 hour

In this tax season,
professional tax consultant
offers real advice for those
whose income is garnered by
creative means. Find out
tips you never knew existed.

3. Child Development 201:
**Make-up, Mask Making, and
Costumes** Giovanna Fregni
1.5 hour

Educational activity
for convention participants
13 and under. Bring any
unusual materials. Water-
colors, magic-markers and
plenty of paper bags will be
provided.

4. Comm. Arts 300: **SF Films of 1984.** Richard Russell
1 hour 55 min

Designed as an open discussion, this program item includes a review of all major and many minor SF films of 1984 and the chance for the audience to react to the presenter's evaluations of these films.

5. Comm. Arts 400: **The Time Lord's Other Burden: Or How the Silk Purse of Dr. Who is made from the Sow's Ear of Series Television.** Michael McFall, Karen Axness
1 hour

A ramble through the back-stage world of the B.B.C. series, Dr. Who. How do they make it so good?

6. Counseling and Guidance 208: **Collaboration** Lisa Tuttle, George R.R. Martin, Bob Cornett, Kevin Randle
1.5 hours

Authors talk about their experiences creating fiction while working with another person.

7. Credible Criminology 411: **Mystery & SF** Marvin Kaye, Phyllis Ann Karr
1 hour

Author/critics discusses the combination of two popular genres and the special difficulties.

8. Dance Nostalgia 110: **Jitterbug for Beginners** Chavys
1 hour

So you wanted to go to the Mixer but don't know how to dance? Maybe you wanted to learn some new (old) steps? Then come for an hour of fun and frolic and learn the jitterbug and maybe some other dance steps too!

9. English 333: **Writing Fiction and How to Sell It** P. C. Hodgell, Phyllis Ann Karr, Marvin Kaye
1 hour

Authors at various stages in their careers will discuss their publishing experiences.

10. English 648: **Tolkien's Shorter Fiction** Richard C. West, John Rateliff, Jared Lobdell. Respondents: John Aussem and Chris Allsberger.
1 hour

Each of the shorter pieces from J.R.R. Tolkien, "Mr. Bliss", "Farmer Giles of Ham" and "Smith of Wootton Major", will be considered.



11. Feminist Psycho-physiology 267: **Fat, Feminism, and Fandom** Gerri Balter, Diane Martin
1 hour

Is "overweight" a feminist issue? How does the fannish community treat it?

12. Geography 770: **Mapping The Imagination: Tolkien, McCaffrey, And Donaldson** Karen Fonstad
1 hour

Ms. Fonstad will entertain her audience with anecdotes from her experiences in compiling three Atlases from works of fantasy by the aforementioned three authors, the last of which is still in progress. She will be showing some of the as-yet unpublished materials from her upcoming Donaldson Altas.

13. History 316: **Alternative Histories** Philip Kaveny, Richard C. West, Jared Lobdell, Samuel Konkin III, 1 hour

The focus here is fantasies that deal with the "what-if" questions raised by significant changes in the familiar past, such as, what if Rome had never fallen, the South had won the Civil War, or the Axis powers had triumphed in World War II?



14. Hydrologic Spectroscopy 699: **The "Pinkwater" Panel** Karen Axness, Bev DeWeese, Joyce Scrivener 1 hour

The extremely popular and hilariously prolific children's and Young Adult fiction author, Daniel M. Pinkwater will be examined as the creator of fantastic characters and settings.

The Cooperative Children's Bookcenter, UW-Madison 4290 White Hall (600 N. Park St) will have a display of Pinkwater's books along with a few others of interest for Fantasy and Science Fiction enthusiasts. Their hours are Fri., 8 to 4, and Sat., 10 to 2.

15. Imaginary Genres 709: **Is Fantasy A Genre?** Jared Lobdell, Verlyn Fleiger, John Rateliff, Taum Santowski 1 hour

The pros and cons of identifying any distinguishable body of literature as a genre called fantasy will be entertained in a formal fashion.

- ★16. Infinite Arts 703: **The Art Of Alicia Austin** Alicia Austin, 1 hour

Distinguished visiting professor, Alicia Austin, will give a slide presentation detailing the many facets of her fantasy are.

- ★17. Intergalactic Literatures 101: **Beginning Science Fiction** Lisa Tuttle, Suzette Haden Elgin, George R.R. Martin, Audience 1 hour

What makes good science fiction? What makes science fiction good?

- ★18. Intergalactic Lit 362: **British SF Scene** Lisa Tuttle 1 hour

Guest of Honor talks about the current state of the SF scene in Great Britain.

19. Journalism 519: **Writing Criticism And How To Sell It** Martin Greenberg, Patricia Warrick, Cate McClenahan, Gary Wolfe, Janice Bogstad 1.5 hour

These published critics will discuss the outlets for non-fictional writing on science fiction and fantasy literatures such as book-length criticism, book reviews, critical articles, annotated bibliographies and related forms.

20. Landscape Architecture 763: **The City And The Shire: Landscapes Of Inter-textuality** Philip Kaveny, Gregory Rihn, Randall Everts 1.5 hours

Panel discusses the striking similarities in urban imagery shared by Tolkien and Lovecraft, and the diverse paths they took to that similarity.

21. Law 829: **Law In Outer Space** Ellen Kozak, Dennis Tiedt 1 hour

Fans who are also attorneys speculate about the state of outer-space law in the not-too-distant future.

22. Levitation Studies 660: **Juggling** Lynn Wysoki

The prestidigital art of object levitation will be demonstrated and discussed by a young practitioner - you may wish to bring soft objects to use for practice.

23. Linguistics 707: **Introduction to La'adan** (Workshop) Suzette Haden Elgin 1.5 hour

Introduction to a card-carrying linguist's REAL work on creating a language uniquely for women, as discussed in her novel Native Tongue.

24. Lisible Scripters 550-555: **Selected Readings by Authors and Critics**

Throughout the weekend, half hour slots have been set aside for readings and presentations by memorable members of the convention such as Lisa Tuttle, George R.R. Martin, Marvin Kaye, P.C. Hodgell, Phyllis Ann Karr, and others.

25. Literary Archeology 698: **Writers You May Not Have Heard Of** Karen Axness, Tom Porter, Bev DeWeese 1 hour

This perennially popular panel mines the archives of the obscure for lost treasures: the works of authors you may not know about now, but will want to seek out after attending.

26. Medical Science 104: **Medical and Bioscience** Laura Spiess, Tom Porter, Susie Porter, David Busch, Barb Gilligan 1 hour

The intersection between science fiction writings, the current state of the art technology, and research in the fields of medicine and bioscience will be discussed by a group of experts in this area of knowledge, as it is presently constituted.



27. Military Sciences 227: **The Law Of The Blade** Gregory Rihn, Wes Noel (aka Thorbjorn the Greysides) 1 hour

Knife care & etiquette.

28. Music 101: **Music** Laura Spiess, Julie Gomoll, George R.R. Martin 1 hour

Is there real SF or fantasy music? What would music of the future sound like and how will it be affected by future technology? Can music really wake the dead?

29. Philosophy 524: **Reading or Sex?** Richard Russell, volunteers 1 hour

If you had to give up one or the other, which would you, and why?

30. Physical Education 555:
**What Makes A Strong Female
Character?** Jan Bogstad, P.C.
Hodgell, Cate McClenahan
1 hour

Is the creation of an positive role-model female character the result of the application of a fixed set of rules or is it more intimately related to the setting of a particular story?

31. Physiological Disorders
300: **A Little Video Were-
wolf** Gene DeWeese 1 hour

Notable Wisconsin author, Gene DeWeese, discusses his book, The Adventures of the Two Minute Werewolf. Recently made into a Television presentation, this shapechanger tale will be aired on Saturday, February 23 - you can watch it in the Media Room at that time or just before the panel on Sunday morning via videotape.

32. Pol Sci 567: **"Cord-
wainer Smith, the Occident
and the Orient"** Jared
Lobdell, Jan Bogstad, Gary
Wolfe, Ross Pavlac 1.5 hour

Cordwainer Smith's fictional writings will be approached from a variety of perspectives including psychoanalytic, historical and thematic concerns.



33. Poli Sci 682: **The
Government And UFO's** Den-
nis Tiedt, Kevin Randle, Bob
Cornett 1 hour

Researchers and writers discuss the government's record and attitude in dealing with UFO reports.

34. Pre-cataclysmic History
102: **Introductory Fantasy**
Gregory Rihn, Georgie Schno-
brich, Eleanor Arnason
1 hour

What is fantasy really? What makes it worthwhile? Opinionated Fantasy devotees explore the boundaries of the genre and its purposes.

35. Religious Studies 937:
**Divergent Views of Prophecy:
Asimov and Herbert Andrew
Hooper** 1 hour

Presentation examining the highly divergent views of prophecy and prediction expounded in two of science fiction's major works: the scientific determination of the Foundation Trilogy vs. the mystical transcendence of Dune.

36. Revisionist Mythology
401: **"Flogging A Dead King"**
Phyllis Ann Karr, Georgie
Schnobrich, Gregory Rihn
1 hour

What is the continuing
fascination with the saga of
King Arthur? Why is there
such a current flood of
Arthuriana?

37. Speculative Astrophysics
854: **Methods of Space
Flight** Richard Russell
1 hour

Are there really any
practical methods of reach-
ing the stars? This discus-
sion focuses on the often
surprising alternatives.

38. Survivalist Economies
222: **Creative Support: Get-
ting Started In Speculative
Fiction** Barbara Emrys,
Jorjet Harper, Eleanor Arna-
son 1 hour

This is a workshop for
unfamous but serious writers
with speculative works in-
tended for publication in
progress.

★39. Survivalist Economies
566: **Surviving as an SF&F
Artist in the Real World**
Alicia Austin, Joan Hanke-
Woods, Jinx Beers, Giovanni
Fregni 1 hour

Practicing artists in
science fiction and fantasy
discuss the whys, hows and
whethers of survival as an
artist, both economically
and psychically, in this
volatile branch of contempo-
rary graphic arts.

40. Urban Studies 460:
**The Martial Arts and Women's
Self-Defense Techniques.**
Kathi Scheller 1 hour

A demonstration of
martial arts techniques and
their applicability for
self-defense in the urban
setting.

★41. Women's Studies 211
(GoH Panel): **Feminist Sci-
ences** Lisa Tuttle 1 hour

Guest of Honor talks
about her research in the
field of feminism.

42. Women's Studies 421:
The Feminine In Eddison
Verlyn Fleiger, Santowski,
Janice Bogstad 1 hour

Examination of the treatment of the feminine idea and female characters in the works of British fantasist E.R. Eddison.

★43. Xenobiology 666: **Cre-
ating Alien Creatures**
Giovanna Fregni, Karen Poor,
Georgie Schnobrich, Alicia
Austin 1 hour

Designing alien anatomies from an artist's standpoint. What works, and why. Practically vs. aesthetic concepts.



Nick's Restaurant

"Always your favorite food"
STEAKS - SEAFOOD · SALADS
DAILY SPECIALS

226 State Street
across from the Civic Center
Open until 1 a.m. Monday - Saturday

the meeting place of the Madison SF Group
Wednesdays at 7:30 pm



This important distinction
is brought to you by SF³.

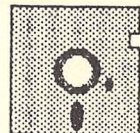


Where does WisCon come from? From the people who participate in SF³ (the Society for the Furtherance and Study of Fantasy and Science Fiction), Madison's official fan organization for over a decade. SF³ meets every Wednesday night at 7:30. The last Wednesday of the month is at UW Union South; all others are at Nick's Restaurant and Bar, 226 State St. Join us! Participate!



Discover What's New

FOR YOUR PERSONAL COMPUTER



Cosmos Computer Co.

301 N. IOWA ST. DODGEVILLE WI 53533

VOICE PHONE: (608) 935-3419

MODEM: (608) 935-2410



ALIENS WELCOME !



HANK LUTTRELL'S



Buy, sell and trade,
new, used and rare mystery
science fiction, comics and
all sorts of good books

Philip E. Kaveny
Associate

(608) 251-6226

108 King Street, Madison, WI 53703

HANK LUTTRELL'S

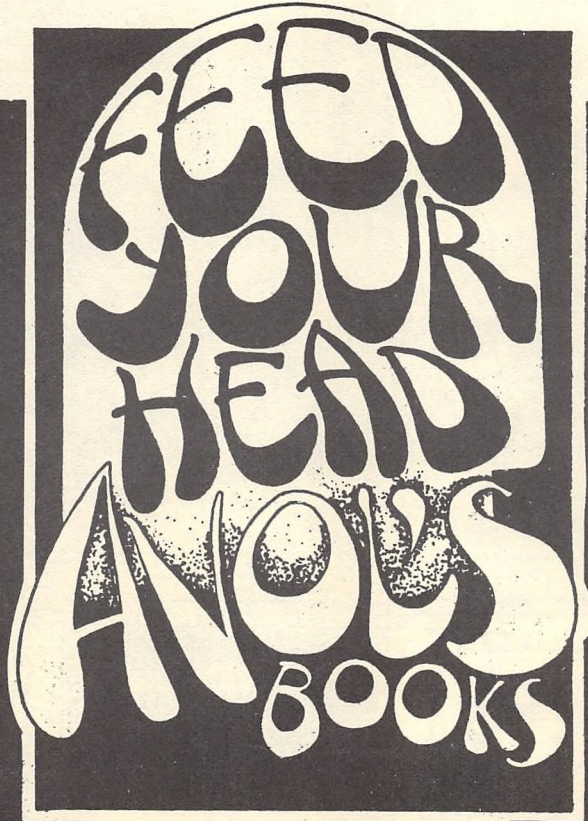


Buy, sell and trade,
new, used and rare mystery,
science fiction, comics and
all sorts of good books

Philip E. Kaveny
Associate

(608) 251-6226

108 King Street, Madison, WI 53703



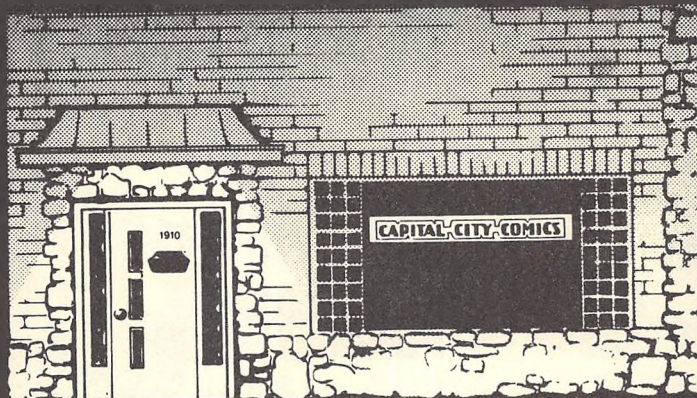
405 W. GILMAN ST. (AT STATE)
255-4730 10-6:30 M-SAT
THURSDAYS TILL NINE

Capital City Comics



1910 MONROE ST., MADISON, WIS. 53711
MON - FRI: 11-7 SAT: 10-5
PHONE (608) 251-8445

BRUCE AYRES, Owner
DAVID TORGERSON, Manager



STAR TREK® TRIVIA

GOLDEN®



Out-of-this-world entertainment is coming to you in Summer '85. Watch for the all-new STAR TREK trivia game, available this July wherever fine games are sold. Relive the voyages of the Starship **Enterprise** from the golden days of TV to the climactic moments of **Star Trek III: The Search for Spock**. Score points by answering trivia questions in these categories: Aliens, Trek Trivia, Starfleet, Alien Worlds, Quotes, and The Ship's Crew. You'll have great times reminiscing and remembering the adventure and excitement of days that may be gone, but will never be forgotten.

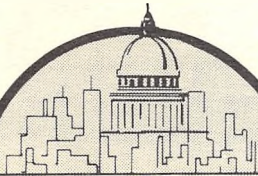
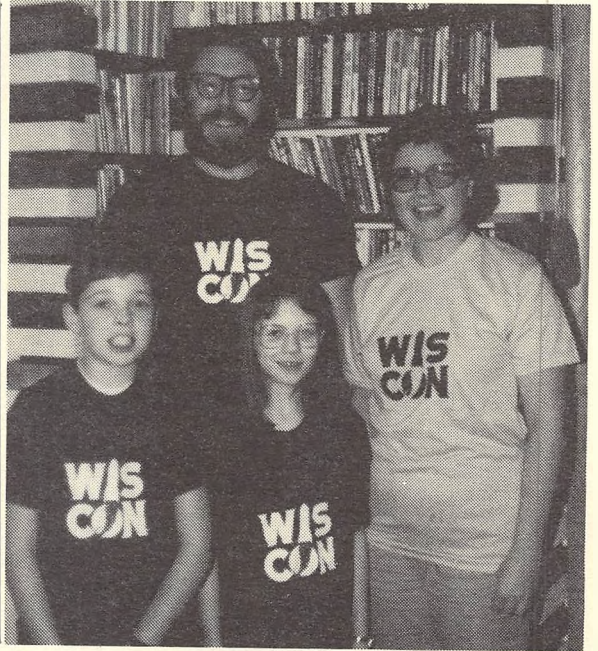
GOLDEN'S STAR TREK® Trivia Game
Western Publishing Company, Inc., Racine, Wisconsin 53404

T-SHIRTS

\$6 for Sizes XXL XXXL
in black and white

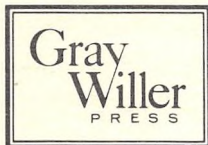
\$5 for Sizes S M L XL
in black, white, red,
yellow, and blue

Institute Bookstore
(Huxteroom)



On the Capitol Square

Typesetting • Design • Layout
Camera Service
Printing • Binding



8 So. Carroll Street • Madison, Wisconsin
Printing 255-1219 Graphics 255-3552

PAUL'S
BOOK
STORE
257-2968

*Established
1954*

670 STATE ST.

BROWSERS INVITED

BOOKS BOUGHT & SOLD

Large General Stock

USED - OUT OF PRINT

WE BUY LIBRARIES

OR SINGLE VOLUMES

We Carry Feminist Science Fiction

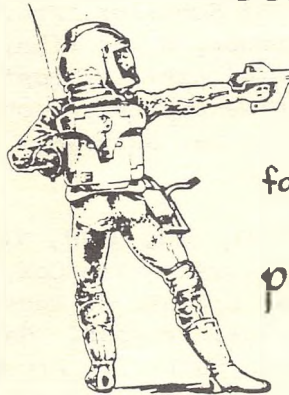


A Room Of One's Own Feminist Bookstore

317 West Johnson Street, Madison 53703
Phone 257-7888

Hours: Monday - Saturday 9:30am thru 5:30pm
Monday & Thursday nights 'til 8pm

GAMES? FIGURES? PLAYING AIDS?



See us in the
Business
School...

Visit our shop
for even wider
selection!
pegasus games
444 State St.
Madison, WI

SCIENCE FICTION MYSTERIES, COMICS AND ALL SORTS OF GOOD BOOKS!



108 King Street
Madison, WI 53703

251-6226

World Headquarters
Mail Order Service

hours:
10:30-5:30 Mon.-Sat.
Sunday 1:00-4:00

20TH CENTURY BOOKS WEST at West Towne in McCrory

open regular mall hours

REGISTER OF TENURED FACULTY

Chancellor: Richard S. Russell, BS

Administration: Carrie Root, BA, BSEE, EIT, Dean

Headquarters: Kathi Scheller, Provost. Steven Vincent Johnson, Diane M. Martin, Gregory G. H. Rihn, Carrie Root, Richard S. Russell.

Personnel: Mike Zielinski, Provost. Christopher Key, Hope Kiefer.

Registration: Janice Bogstad, Provost. Linda Harms, Peter Theron.

Handicapped and Medical Services: Dr. Susan Kinast-Porter, Provost. Thomas R. Porter.

Exhibit: Lucy Nash, RN, RNP, Dean

Art: Lucy Nash, Provost. Jim Cox, Kim Nash.

Committee Display: Richard S. Russell, Provost.

Computer: Rocky Wenz, Provost. Gary Muench.

Huckster Room: Hank Luttrell, Provost.

Media: Philip Kaveny, HSG, JS, Dean

Audio-Video: Gregory G. H. Rihn, Provost. Michael Coates, Dennis Hackbart, Peter Jacobson, Rebekah Rogge, Julie Shivers.

Film: John Peacock, Provost. Perri Corrick-West.

Program: Gregory G. H. Rihn, JD, Dean

Development: Janice Bogstad, Provost.

Expediting: Gregory G. H. Rihn, Provost.

Guest of Honor: Janice Bogstad and Jeanne Gomoll, Co-Provosts.

Public Relations: Dennis Tiedt, JD, Dean

Publications: Rebekah Rogge, Provost. Janice Bogstad, Jeanne Gomoll, Julie Gomoll, Diane M. Martin, Lynne Ann Morse, Lucy Nash, Carrie Root, Richard S. Russell, Georgie Schnobrich (emeritus).

Advertising: Mike Zielinski, Provost. Julie Gomoll, Hope Kiefer, Hank Luttrell.

Publicity: Hank Luttrell, Provost.

Social: Andrew P. Hooper, DJ, BW, Dean

Conviviality: Julie Gomoll, Provost. Don Helley, Spike, Greg Wood.

Entertainment: Andrew P. Hooper, Provost. Karen F. Jones, Gregory G. H. Rihn.

Games: Andrew P. Hooper, Provost. Michael DuCharme, Peter Larsen.



CAMPUS MAP

